

Contact details

 TorbayAndSouthDevonFT

 @TorbaySDevonNHS

www.torbayandsouthdevon.nhs.uk/

The Lodge Cancer Support and Information centre Monday to Friday 09:00 – 16:00 01803 656490 or email

tsdft.thelodge@nhs.net

Macmillan cancer support- www.macmillan.org.uk

My Sunrise App – download free from app stores & select location - Torbay

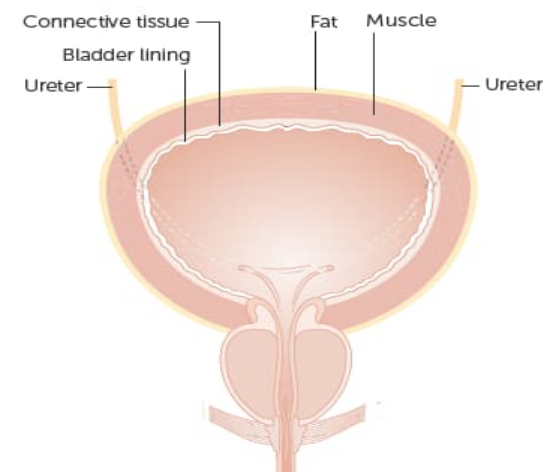
Fight bladder cancer- www.fightbladdercancer.co.uk

Action Bladder Cancer UK www.actionbladdercanceruk.org

For further assistance or to receive this information in a different format, please contact the department which created this leaflet.

PATIENT INFORMATION

Urology Cancer Nursing Team - Bladder



Cancer Research UK

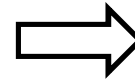
Working with you, for you

You have been referred to the Urology Cancer Nurses:

We are offering support, information and advice concerning your diagnosis and treatment pathway.

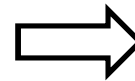
- Information about the investigations that have been requested for you.
- Help with understanding test results.
- Providing information about your diagnosis and treatment options.
- Advise and support with symptom management
- Liaise with specialist team (MDT).
- Available for telephone and face to face consultations.
- Psychological and emotional support for you and your family.
- Support when attending clinical appointments.
- Link with hospital/community.
- Sign posting/ referral to other agencies.
- Support with completing a health needs assessment (HNA).

Bladder Cancer Pathway:



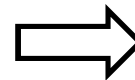
Common symptoms of bladder Cancer:

- visible blood in urine
- GP urine test - dip stick blood with no infection
- recurrent urine infections
- Frequency, urgency or pain when passing urine when urine infection is not detected
- Aches or pains in the lower back or stomach



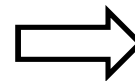
Referral from GP:

- 2WW - two-week referral to a Urological consultant to investigate suspicion of bladder cancer



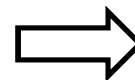
Investigations:

- Flexible cystoscopy with Urology consultant
- CT scan, diagnostic imaging test of urinary system Bladder, Kidneys and water pipes (ureters)



Biopsy:

- TURBT - Transurethral resection of bladder tumour. In day surgery
- Histology - looking at the sample of tissue under a microscope.



Confirmed diagnosis and treatment recommendation:

- MDT - multi disciplinary team meeting for grading, staging and treatment options.