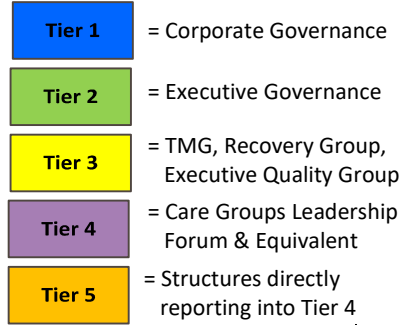
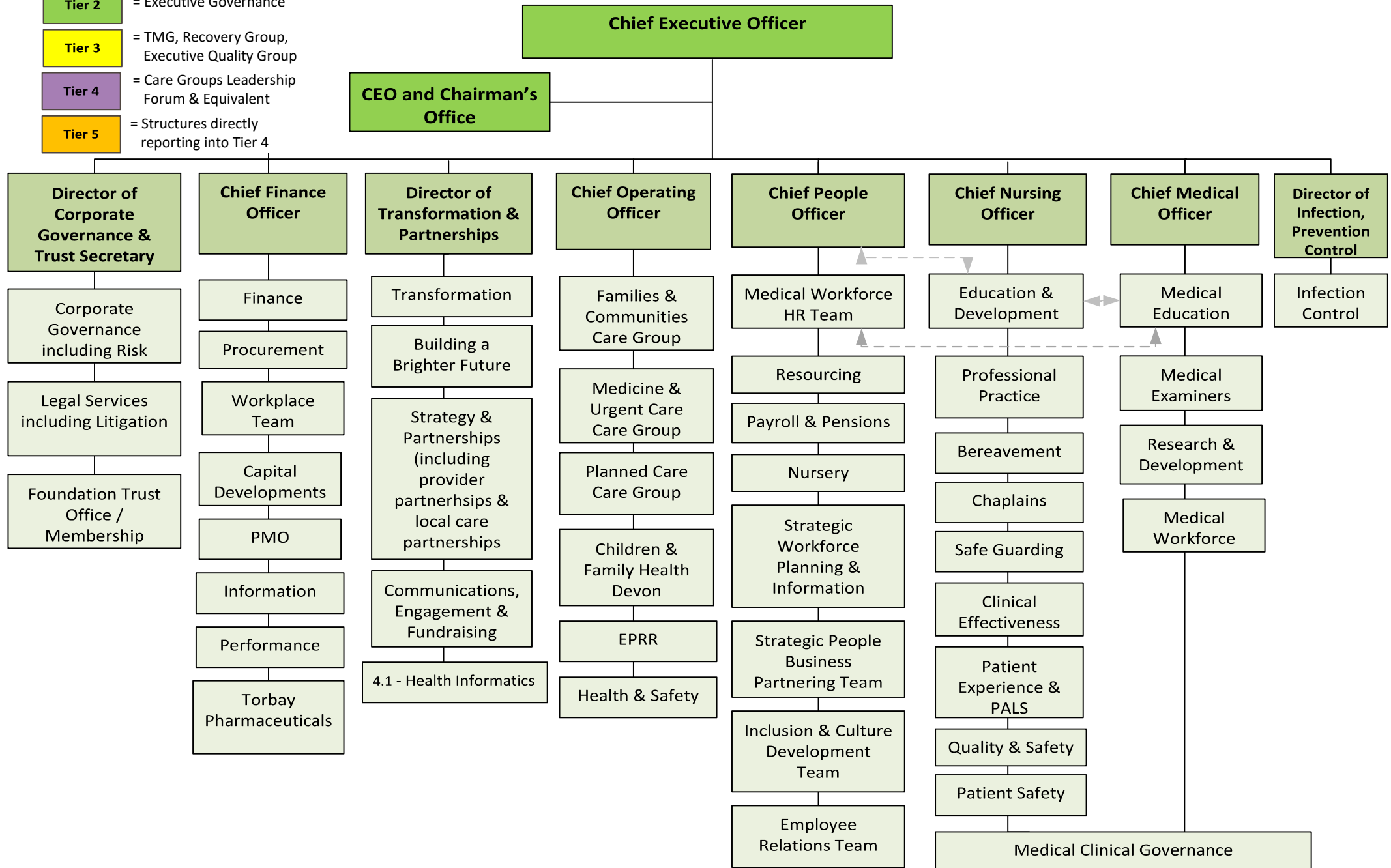


## Key

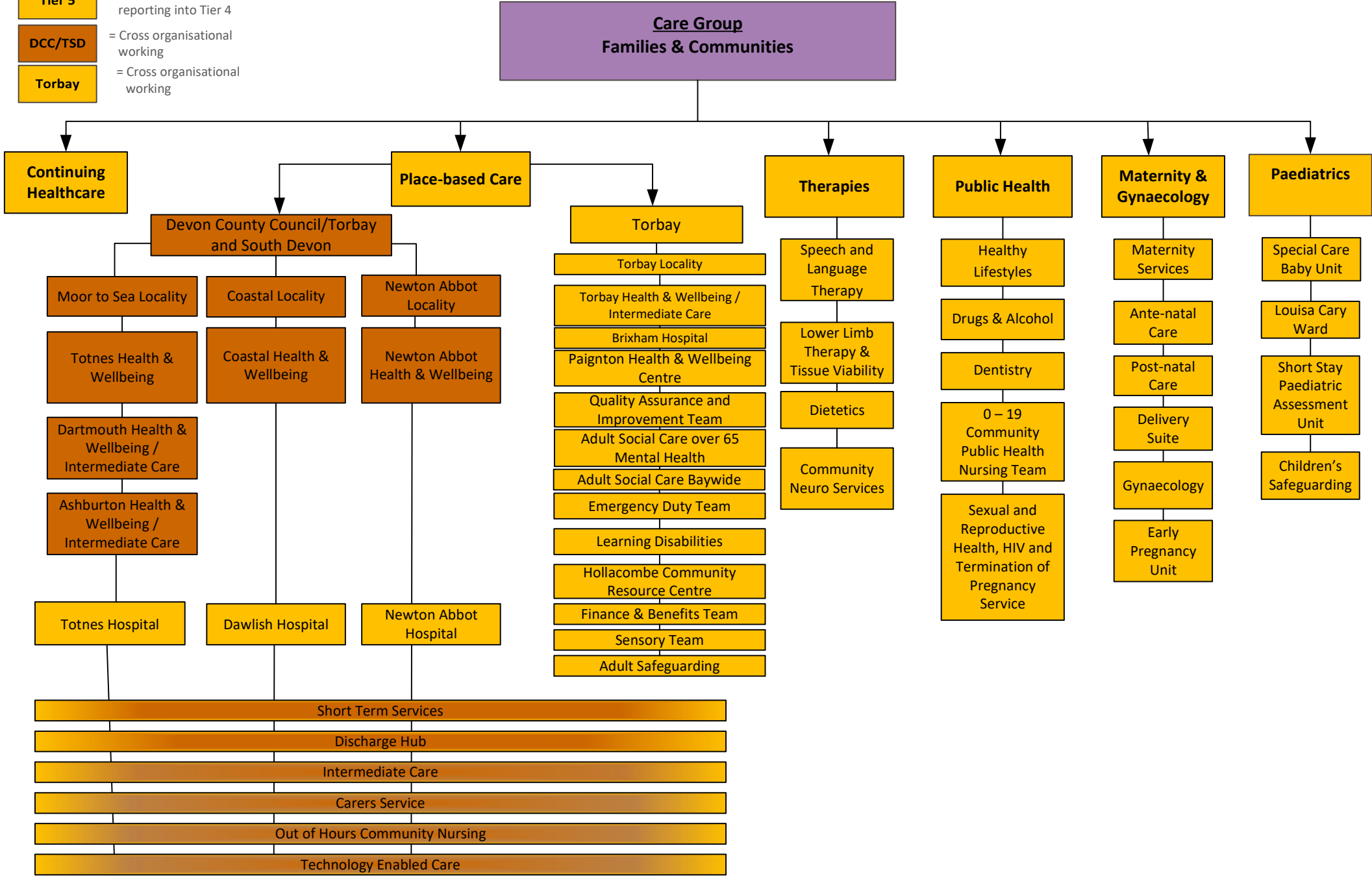


## Executive Accountability Structure



- Key**
- Tier 4** = Care Groups Leadership Forum & Equivalent
  - Tier 5** = Structures directly reporting into Tier 4
  - DCC/TSD** = Cross organisational working
  - Torbay** = Cross organisational working

ICO CARE GROUP STRUCTURE



## 3.2

### ICO CARE GROUP STRUCTURE

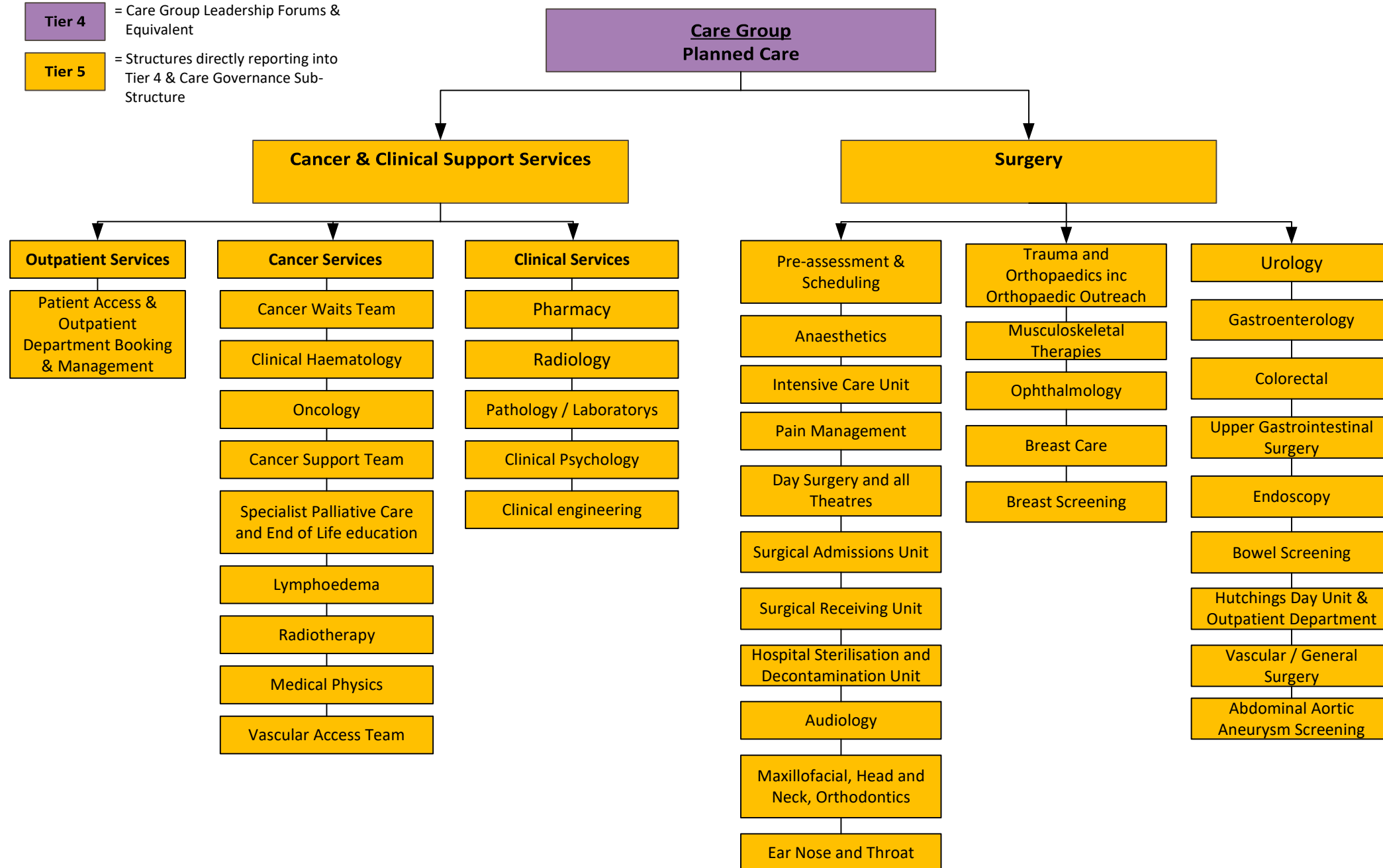
#### Key

**Tier 4**

= Care Group Leadership Forums & Equivalent

**Tier 5**

= Structures directly reporting into Tier 4 & Care Governance Sub-Structure



### 3.3

#### Key

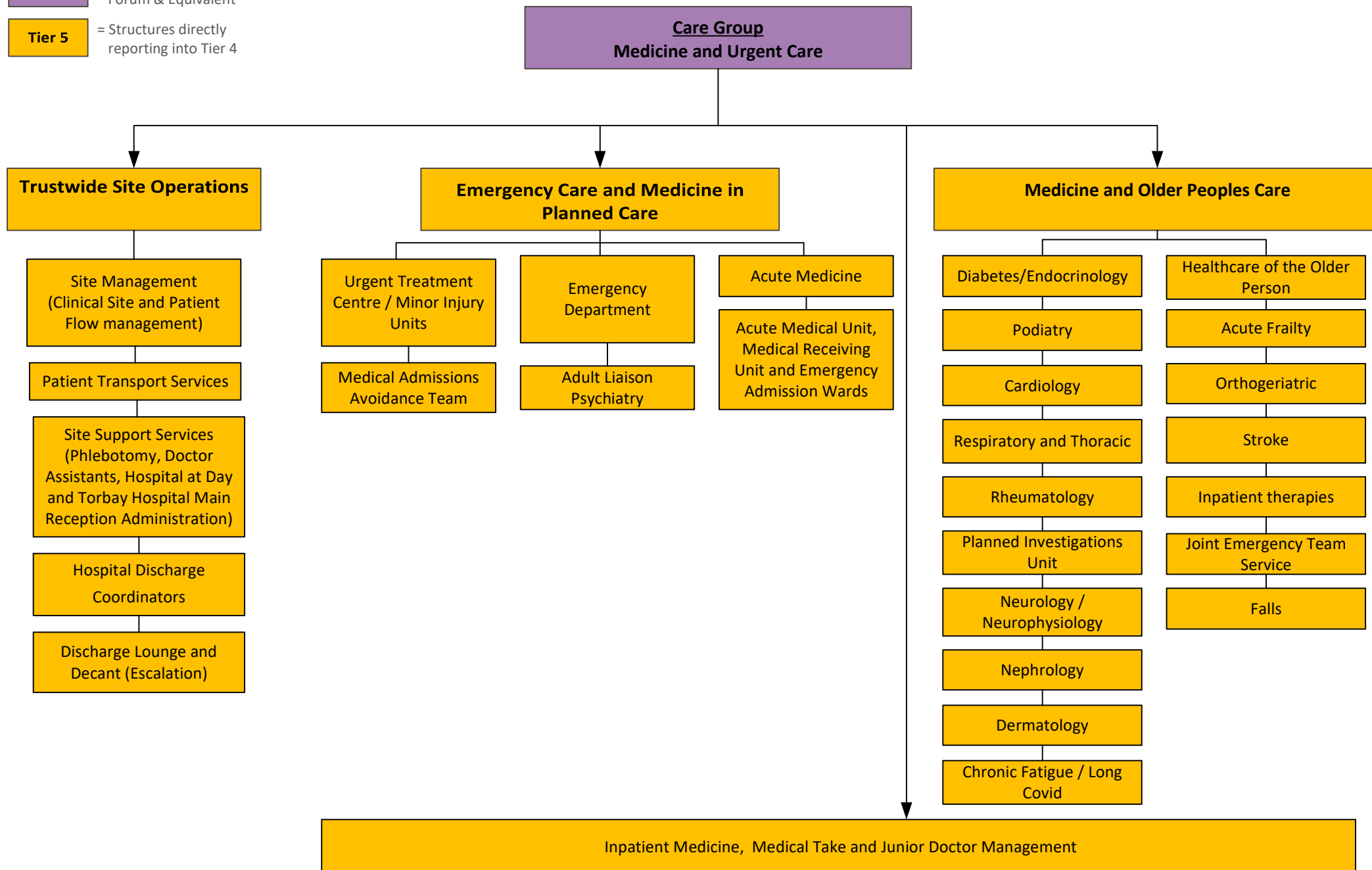
**Tier 4**

= Care Groups Leadership Forum & Equivalent

**Tier 5**

= Structures directly reporting into Tier 4

#### ICO CARE GROUP STRUCTURE



CFHD Governance Structure

- Tier 1** = Corporate Governance
- Tier 2** = Executive Governance
- Tier 3** = TMG, Recovery Group, Executive Quality Group
- Tier 4** = Care Groups Leadership Forum & Equivalent
- Tier 5** = Structures directly reporting into Tier 4

